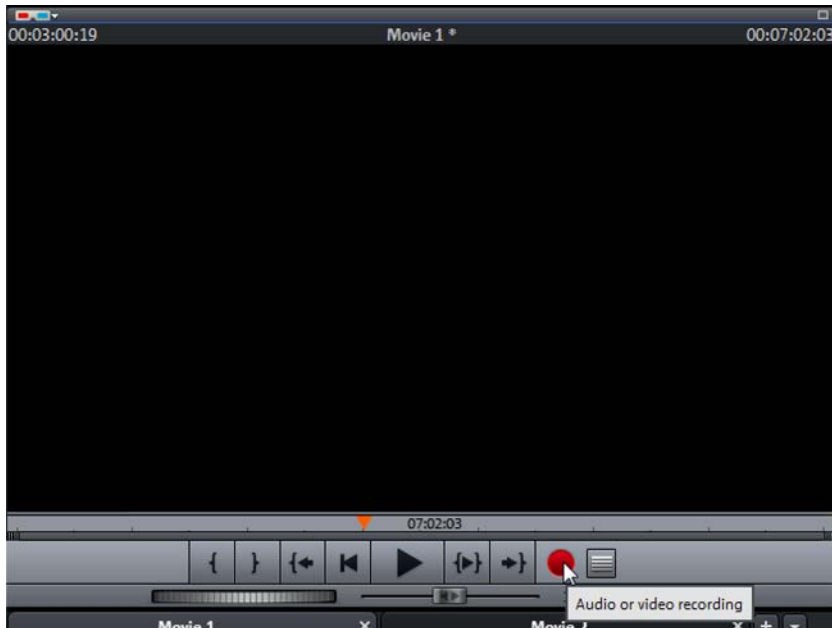


Recording

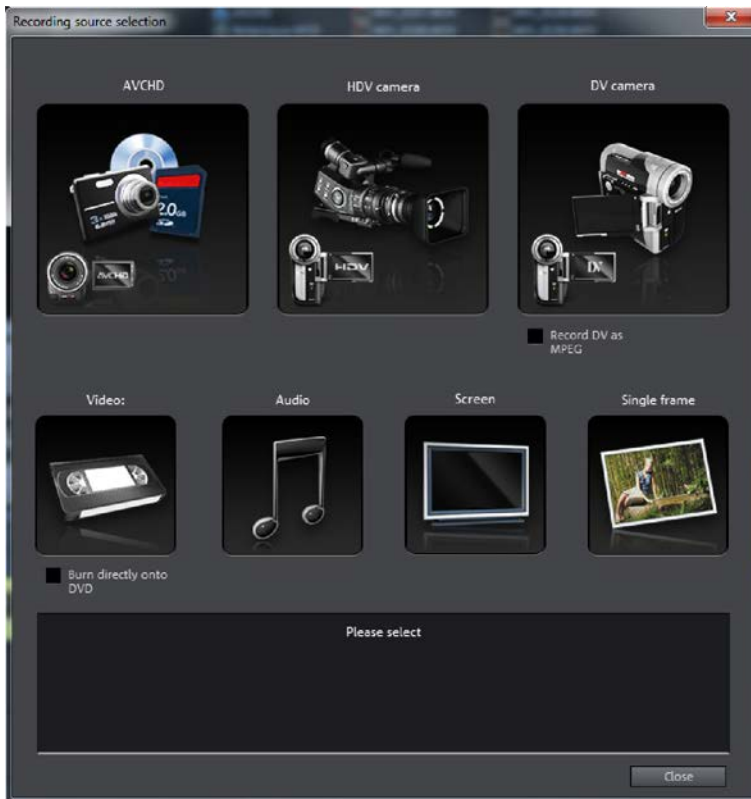
Attention users of older versions: The process described here applies to Version 17 and higher. Earlier versions had a separate workspace for **RECORDING**. You can access a similar menu to the one described here using the **RECORD** button.

Nearly every project begins by importing recordings to your computer. You will find all the recording options by pressing the record button below the video monitor.



"Record" under the video monitor.

The **RECORDING SOURCE SELECTION** dialog opens. The three most popular video formats will appear in the top row: **AVCHD**, **HDV** and **DV**. Below you will also find analog **VIDEO** recording as well as **AUDIO** recording and a capture function for the computer monitor and still frames.



Recording sources

Import AVCHD movies

AVCHD uses the MPEG4 codec. When using the program for the first time, you will be asked to activate it together with the Dolby Digital stereo decoder.

Activation is free in all MAGIX Movie Edit Pro versions starting from version 17 and can be done online or by phone. You must register MAGIX Movie Edit Pro for online activation. Follow the activation instructions.

In Movie Edit Pro 17 AVCHD activation was free only in Plus and Premium versions.

AVCHD is the current trend in consumer cameras. Using this recording and coding process, you can record FullHD video using minimal space.

These cameras no longer use tapes for recording, but instead use a hard drive, memory card or a DVD as the storage device. These movie files can be imported directly.

Follow these steps to import AVCHD files:

- ▶ Connect your AVCHD camera or a memory card containing AVCHD files to your computer.

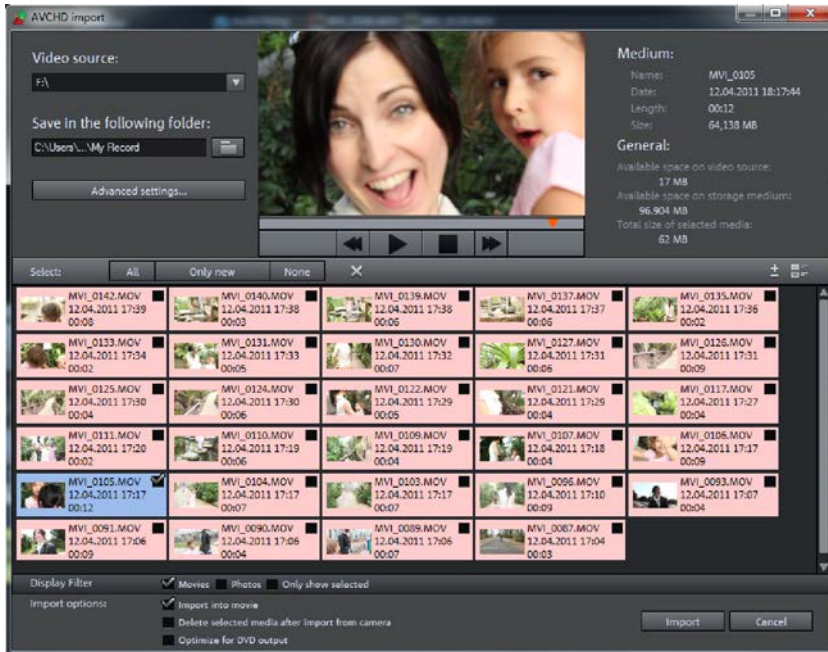
Cameras with USB sticks or DVD always require installation of the enclosed UDF driver. Only then can Windows work with the file system properly. This is not necessary when recording with hard drives, since hard drives are integrated as external data carriers.

- ▶ In the **RECORD SOURCE SELECTION** dialog, click on **AVCHD**.



AVCHD as recording source

The **AVCHD IMPORT** dialog will open. It copies files from external drives to your computer and imports the files directly into the timeline if necessary.



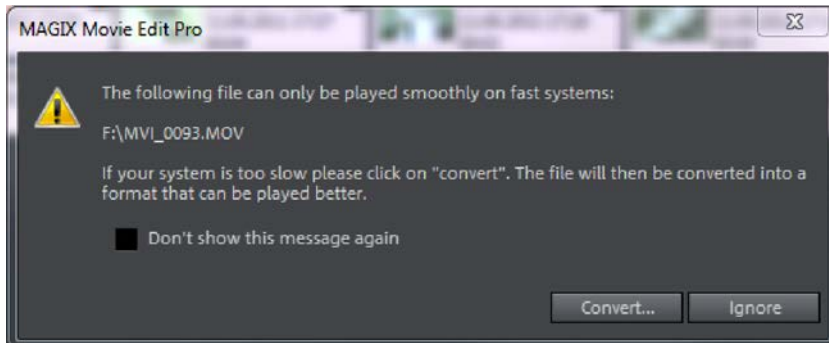
AVCHD import

Select your camera's drive as it appears on your computer from the drop down menu, **VIDEO SOURCE**.

A list of all files you can use in MAGIX Movie Edit Pro will appear.

- ▶ In **SAVE IN THE FOLLOWING FOLDER...** select where the imported files should be saved.
- ▶ Using the **DISPLAY FILTER**, you can select to display videos, photos or all selected files.
- ▶ Select the files in the list which you would like to import into your video project.
- ▶ In the **IMPORT OPTIONS**, select whether MAGIX Movie Edit Pro should additionally import the files into the timeline and whether the media should remain on the camera after the import process.
- ▶ If you intend to burn the project to a DVD, you should also activate the **OPTIMIZE FOR DVD OUTPUT**. Your video material will then be converted and can be edited in MAGIX Movie Edit Pro significantly faster.
- ▶ When you are satisfied with your selection click **IMPORT**.

If your system doesn't support native AVCHD editing, a dialog will appear where you can convert the recording to MPEG-2 format.



Convert during import?

Conversion is highly recommended for weaker PC systems. (System requirements for native AVCHD editing can be found on the MAGIX Movie Edit Pro packaging.) Editing MPEG-2 material is much more fluid. Conversion takes approximately three times the playback time, depending on your computer's power.

Imported files will then be found in the MAGIX Movie Edit Pro Arranger. Each file is a separate object and can now be edited.



AVCHD files in the timeline

HDV camera

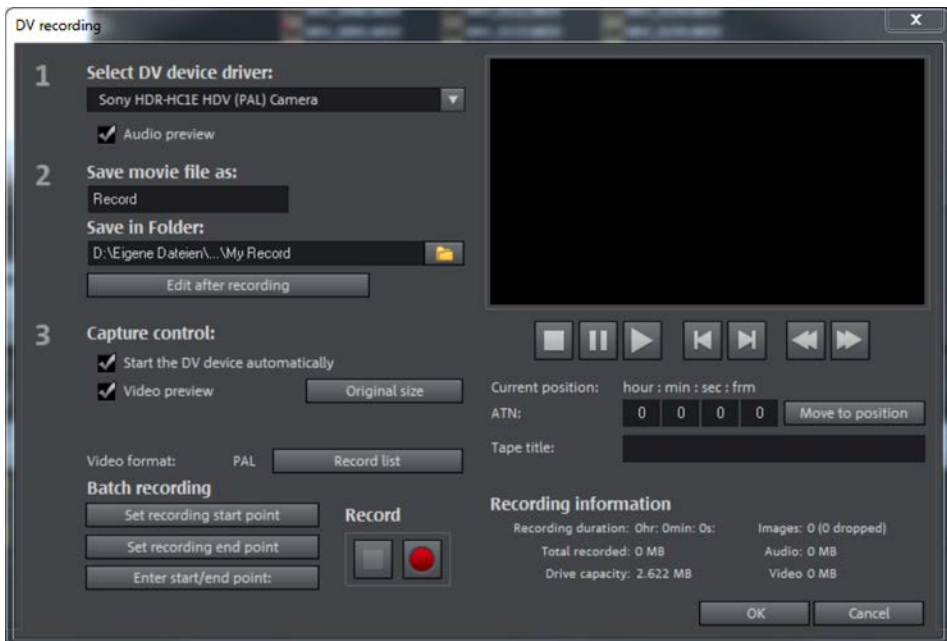
An HDV camera is connected to your computer with a Firewire cable.

1. Before choosing a video source, connect the switched-off camera to your PC.
2. Turn the camera on and switch to playback mode to play the movie. Stay in camera mode for live recordings.
3. Click on the **HDV CAMERA** button.



HDV camera as a recording source

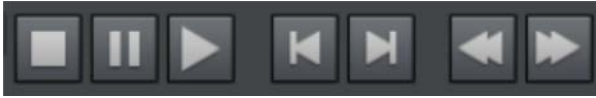
4. The installed HDV device driver is listed under section 1 of the HDV RECORDING dialog window. Usually this is the appropriate driver for your camera, however you can specify an alternative.
5. Select a folder to save the file and enter a file name in section 2.



Dialog for HDV recording

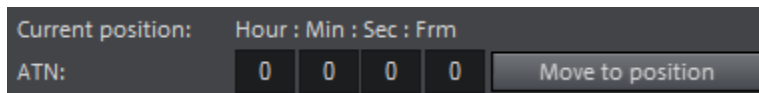
Start recording

1. Search for the start position of the recording using the buttons located below the preview monitor. The following control buttons, similar to the ones found on a VCR, are available: **PLAYBACK**, **STOP** and **PAUSE** as well as **REWIND** and **FAST FORWARD**.



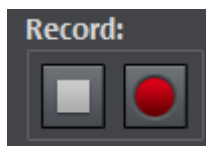
Control buttons for the video camera

2. Find a position on the tape by entering the exact position or by using the button to move to that position directly. This feature is useful if you have several movies on a tape and know exactly when each movie begins.



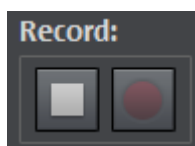
Move to tape position

3. Enter a name for each tape under **TAPE TITLE**. During transfer, MAGIX Movie Edit Pro connects your recordings with information about the tape and the position. This makes it possible to transfer video data missing in a project at any time. The tape title is extremely important for this **LOGGING** feature.
4. Click on the red record button to start the recording.



Start recording

5. The record button is grayed out during recording and the **STOP** button becomes selectable.



Stop recording

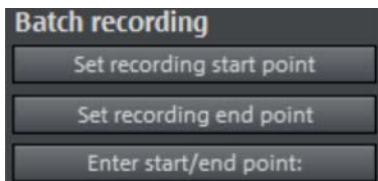
6. If you deselected the video preview option in section 3, you will not see a movie in the preview window.
7. Select the option **START DEVICE AUTOMATICALLY** to start the tape as soon as the record button has been clicked. If you deselect this option, you will also have to click on playback.
8. Stop recording by clicking the **STOP** button. For further recordings, search for a position on the tape again and repeat the process.

Automatic recording of scenes

If you don't want to transfer an entire movie to the hard drive, select the scenes you want to copy before recording. This saves a lot of hard drive space and reduces the amount of editing necessary.

To do this, set recording start and end points when playing the video.

1. Start playback in the HDV recording dialog.
2. Click on **SET RECORDING START POINT** as soon as you find a scene you want to transfer to your PC.
3. Click on **SET RECORDING END POINT** at the end of the scene.



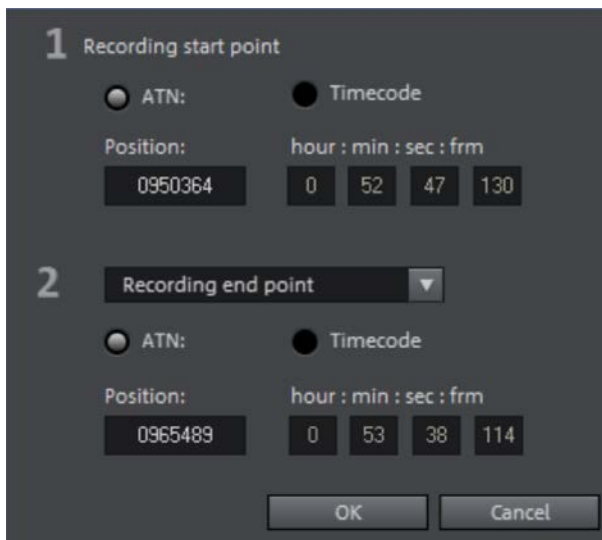
Batch recording options

4. A recording list with an overview of the defined scenes automatically appears to the right of the dialog window. Show or hide it using the **RECORDING** button.



Recording list displaying 2 scenes

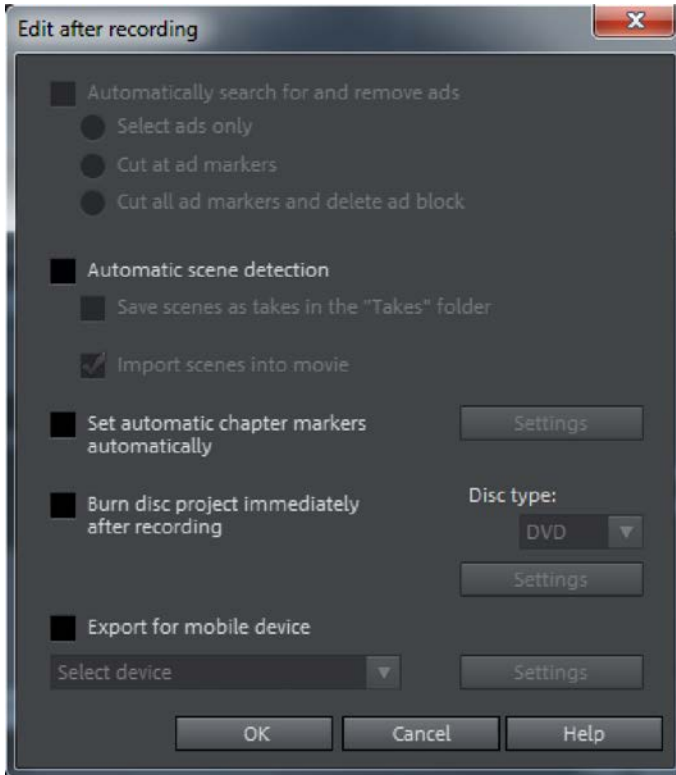
5. Go to **DELETE SELECTED ENTRIES** to delete selected entries and remove scenes from the recording list.
6. If you know the exact start and end positions click on **ENTER START/END POINT**.



Setting positions manually

7. After having defined all scenes, click on the record button to start the transfer. The entries in the list are processed one after the other and the scenes are transferred.
8. Scenes that have been transferred are marked with a starting image and the word (DONE).

Edit after recording



Edit after recording

Here you can specify what you want MAGIX Movie Edit Pro to do after completing a recording. For example, you can search for and remove commercials in TV recordings. Commercials can be identified due to a format change from 16:9 to 4:3 or by strong volume fluctuations.

Leave the automatic scene detection feature activated, as this will automatically divide your movie. Scene recognition in HDV material is based on time stamps which are created during every recording. Other formats use drastic changes in movement and brightness within the movie.

If you activated the feature that automatically sets chapter markers, you can define additional properties by clicking on **SETTINGS**. You should define at least one